

City of Philadelphia: CHILD CARE FACILITIES FUND

OUR MISSION

The mission of the City of Philadelphia: Child Care Facilities Fund (CCFF) is to provide support to high quality early childhood education providers located in Philadelphia for the maintenance and improvement of their facilities to maintain a high level STAR rating. Providers may apply for a grant for facility improvements that fit in the category of minor to mid-level renovations and/or the purchase and installation of large appliances. The funding limits for the Fund are as follows:

\$25,000 for Commercial Center and Group Facilities

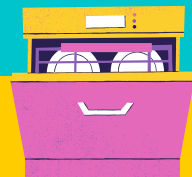
\$12,500 for Residential Family and Group Facilities

Did you know that the Facilities Fund can help you meet and sustain best practices in health and safety protocols? Below are some suggested projects and how they can help to meet the guidelines and recommendations.

MAXIMIZE YOUR SPACE

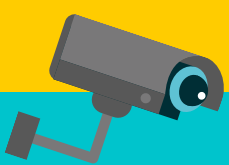
Grant funds can go toward minor to mid-level renovations such as **outfitting alternative spaces** to be used as classroom space or the building of an **additional room** that could serve as an isolation room during the COVID-19 pandemic and a classroom thereafter. Installing walls to **divide existing spaces**, **extending half-walls** to the ceiling to reduce noise levels, or purchasing **partition walls** to separate space are also ways to meet best practices. Also, consider purchasing **tables**, **chairs**, **staff lockers**, and **individual children cubbies**, with grant funds when outfitting these spaces.

HEALTH & SAFETY PROTOCOLS



Improving your classroom space can make cleaning and routines more efficient. Projects such as **installing bathrooms** and **multiple sinks** in each classroom can cut down shared use, improves wait-times, transitions, and supervision. The purchase of large appliances, such as a **commercial dishwasher**, or the installation of a **three-compartment sink** can help your center with the proper sanitation of dishes and toys. A **washer and dryer** can be used for the cleaning of linens and other soft materials. Consider **locking cabinets** to properly store your cleaning supplies. Also, upgrades to the outdoor space like adding **outdoor sinks or sanitation stations** can improve your health and safety routines as well as decrease transition periods. Sanitation stations and physical barriers, like Plexiglas, are also great to have at the entrances of your programs to utilize as you complete the recommended daily health screenings of children, staff, and others.

SUPERVISION, SAFETY & COMMUNICATION



Currently, it is recommended that providers minimize the number of visitors, including parents, within their centers/homes. So pick-up and drop-off times need to become more efficient for families, providers, and staff. Grant funds can help to make these improvements through the purchase of **remote communication systems**, such as **intercoms and walkie talkies**. Also, **camera systems** are a new addition to regulations for supervision in homes. Providers can use these indoors to provide additional monitoring, such as during brief lapses of supervision for Family Child Care Home providers, or to monitor transitions. Installation of outdoor cameras can also improve security and safety for your facility.

TO LEARN MORE AND ACCESS THE APPLICATION,
PLEASE VISIT [PHILAFACILITYFUND.ORG!](https://philafacilityfund.org)